

# EVENT 5800



outdoor unit



## HIGH CAPACITY STUDIO TRANSMITTER LINKS



indoor unit



## INTELLIGENT SYSTEM DESIGN

Spectrum-scalable digital radios with user-selectable data rates enable broadcasters to have greater flexibility in STL planning and future growth.

**Moseley**  
BROADCAST

# EVENT 5800



## TAKE ADVANTAGE OF WIRELESS HIGH PAYLOAD STL/TSL CAPACITY

Moseley EVENT STL/TSL systems provide up to 155 Mbps combined IP, T1/E1 payloads. Multi-station clusters can convey multiple linear uncompressed audio pairs for a truly cost-effective STL/TSL link. Connect your existing T1/IP audio hardware directly into the EVENT system, or use Moseley Rincon for your audio payloads. An optional DVB-ASI module is available for full duplex video.

EVENT systems are fully bi-directional including a Software Defined Indoor Unit (SDIDU) and Outdoor Unit (ODU), eliminating the need for costly waveguide hardware. The ODU is available in the license free 5.8 GHz band, or licensed 11, 18, or 23 GHz bands. Appropriate external antennas are selected based on path length.



## IP APPLIANCES AND APPLICATIONS

Offer IP transmitter control, surveillance security, and site monitoring to reduce downtime, and protect valuable station assets while saving travel time to the site.



## REMOTE MIRRORED SERVERS

From the transmitter site, offers backup of business records and programming content to get you back on the air quickly in the event of a studio outage.



## EMAIL AND INTERNET ACCESS FROM THE TRANSMITTER SITE

Saves engineers time accessing manuals or technical support from manufacturers during maintenance sessions.



## SIMPLE NETWORK MANAGEMENT PROTOCOL (SNMP)

Full SNMP package with GUI provides easy monitoring and configuration changes.

## INTELLIGENT SYSTEM DESIGN

Event 5800 consists of a Software Defined Indoor Unit and Outdoor Unit. The Event 5800 radios are spectrum and data rate scalable, which enables broadcasters to have greater flexibility in STL planning and future growth. The integrated T1/E1 and Ethernet interfaces allow for a combination of T1/E1 and IP packet data.



Combining the Rincon or Starlink SL9003T1, to the EVENT 5800 creates a high capacity bi-directional STL/TSL.



## QUICK DEPLOYMENT

Event 5800 operates in the ISM 5.8 GHz unlicensed band. The overcrowded 950 MHz licensed STL band can be avoided. Time consuming frequency coordination and licensing costs and delays are not required. A new STL system can be up and running quickly and cost effectively.

## EXCELLENT RETURN ON INVESTMENT

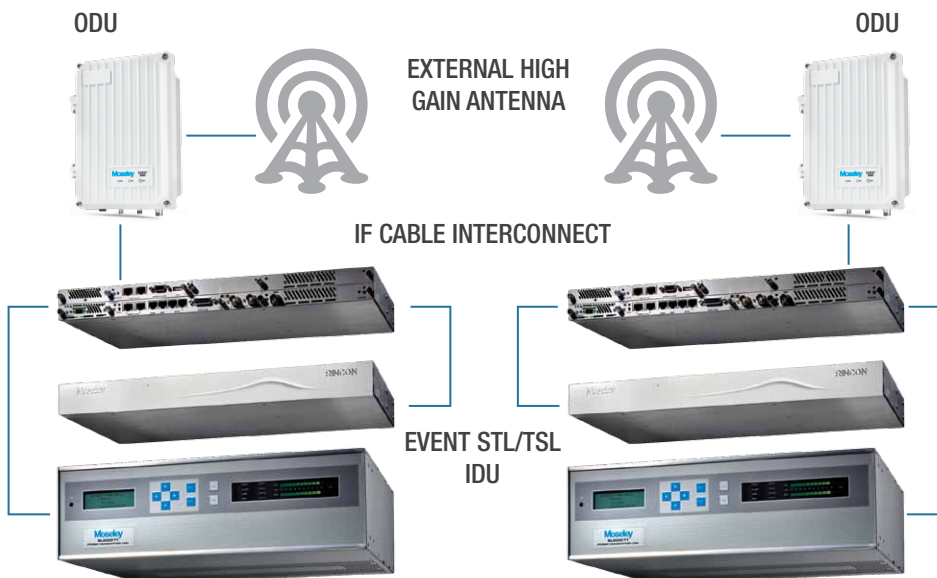
Event 5800 eliminates multiple leased audio, voice and data lines to and from transmitter sites. This results in significant savings in monthly recurring costs. So, in addition to providing the highest quality STL possible, Event 5800 pays for itself in a very short time.

## SOPHISTICATED NETWORK MANAGEMENT

The Event 5800 provides superior network management capability with its built-in Web Server and SNMP software. Unmatched system analysis and monitoring can be utilized to create multi-level system alarms. Remote monitoring and control of your entire microwave network is simplified. System security is paramount; the Event 5800 features multi-level configuration permissions and network data encryption. Accounting and logging features provide protection and information about access attempts.

## UNPARALLELED ROBUSTNESS

To overcome industrial and other man-made impulse noise as well as other burst-mode interferences, powerful Reed-Solomon and Trellis-Coded Error Correction is standard. Unfaded BER error free performance in excess of 10-12 is unparalleled. An interleaver further enhances error concealment. In addition, an adaptive equalizer overcomes multipath and other channel impairments.



## CARRIER CLASS TRANSPORT

- Distances 20 miles or greater
- External High Gain Antenna
- ISM 5.8 GHz Unlicensed Band
- Adaptive Power Control
- Powerful Reed-Solomon Error Correction
- 1+1, 2+0 Redundancy
- Advanced Diagnostics

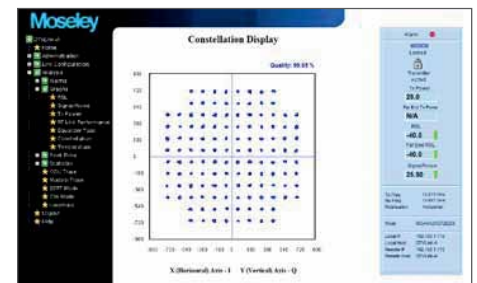
## HIGH PAYLOAD CAPACITY

- Multi-station Clusters
- HD Radio™ and Multicasting
- LAN/WAN Extension to Site
- Backhaul RPU and SAT Downlink

## UNEQUALLED AUDIO PERFORMANCE USING STARLINK OR RINCON

- Linear Uncompressed Audio
- HD Radio™ & Multicasting
- AES/EBU Digital or Analog (L+R) inputs & outputs
- 32, 44.1, or 48 kHz Sample Rates
- Low Delay
- Built in RS-232 Data Channels

## WEB-BASED INTERFACE



SPECIFICATIONS

# EVENT 5800 STL/TSL

SYSTEM

<b>FREQUENCY BAND</b>	ISM band 5725 - 5850 MHz Unlicensed
<b>PAYLOAD CAPACITY</b>	155 Mbps Ethernet + T1/E1 + DVB-ASI Full-duplex
<b>PAYLOAD OPTIONS ETHERNET</b>	Up to 155 Mbps Full-duplex 2 streams
<b>E1/T1</b>	Up to 16 E1/T1 Full-duplex
<b>DVB-ASI (optional)</b>	Up to 100 Mbps Full-duplex, (1x or 4x)
<b>NMS TRAFFIC</b>	Up to additional 2 Mbps Full-duplex
<b>MODULATION</b>	QPSK, 16-QAM, 32-QAM, 64-QAM, 128-QAM, 256-QAM
<b>CHANNEL BANDWIDTH</b>	10, 20, 45 MHz
<b>ERROR CORRECTION</b>	Trellis-coded Modulation concatenated with Reed-Solomon Error Coding
<b>IF</b>	350 MHz Transmit 140 MHz Receive 10 & 5.5 MHz Comm 48 V dc
<b>IF CABLE (IDU to ODU)</b>	LMR-400 up to 256 m LMR-200 up to 100 m
<b>IF Cable Connector</b>	TNC Female
<b>OUTPUT POWER</b>	+5 to +25 dBm
<b>RECEIVE SENSITIVITY</b>	-84 dBm to -80 dBm (E1/T1) -84 dBm to -70 dBm (Ethernet DVB-ASI) Sensitivity varies per selected modulation and bandwidth
<b>ANTENNA CONNECTOR</b>	N-Type Female

NETWORK MANAGEMENT

<b>GUI</b>	Built-in Web Browser
<b>SNMP</b>	V2, V2C, V3

DATA INTERFACE

<b>DVB-ASI</b>	BNC
<b>Ethernet</b>	RJ-45
<b>E1/T1 1 + 2</b>	RJ-48C, 100 Ω
<b>T1/E1 3 - 16</b>	Molex HD60-F

AUXILIARY CONNECTIONS

<b>PORT</b>	Two Form C relay outputs 2 TTL outputs
<b>NMS</b>	2 x 10/100Base-T
<b>DATA SERVICE CHANNEL</b>	Up to 64 kbps, RS-232

POWER

<b>INTERNAL</b>	48 V dc ± 10%, < 70 watts; 100-240, 47-63 Hz external power adapter
<b>EXTERNAL</b>	

COMPLIANCE

<b>FCC Part 15</b>
<b>IC: RSS210</b>

ENVIRONMENTAL

<b>TEMPERATURE</b>	IDU -5° to 55°C ODU -30° to 55°C
<b>RELATIVE HUMIDITY</b>	IDU 0 to 95%, non-condensing ODU Up to 100% at 45°C
<b>ALTITUDE</b>	IDU/ODU both 4500 m

MECHANICAL

<b>SIZE</b>	<b>IDU</b>	1 RU Rack Mount 10" x 17.5" x 1.75" (25.4 x 44.45 x 4.44 cm)
	<b>ODU</b>	Pole Mount 13" x 9" x 6" (33.02 x 22.86 x 15.24 cm)
<b>WEIGHT</b>	<b>IDU</b>	7 lbs. (3kg)
	<b>ODU</b>	15 lbs. (7kg)

The Moseley sales team can custom  
configure your EVENT 5800 STL/TSL.

Visit us at:

[www.moseleybroadcast.com](http://www.moseleybroadcast.com)

These specifications are subject to change without notice. Rev.6/2013



Moseley Associates Incorporated • 82 Coromar Drive • Santa Barbara, CA 93117-3093  
Phone (805) 968-9621 • Fax (805) 685-9638